

Advanced Integrative EMDR and Play Therapy

Creative Playful Solutions for EMDR with Child Therapists and Play Therapists



Austin, TX | 23 CEs Total | In-person
2 hours EMDRIA-approved consultation

Cost: \$789, includes Welcome Dinner and two consultation sessions at no additional cost.

This five-day intensive workshop in Austin, Texas is an opportunity to do a creative, deep dive into working with complex child and youth cases using play therapy, expressive arts and EMDR processing in a congruent and integrative way which integrates ego state work in a meaningful way for dissociative children and teens. We will combine teaching with experiential learning to push the boundaries of your expertise in a small group training limited to 22 participants. Small group consultation and additional case examples added! Walk around East Austin to experience live music and an amazing arts scene.

Pre-Requisite: Previous training on EMDR and Children and experience providing EMDR to children.

Dates 2025

January 24th, 9:00am - 4:00pm
Welcome Dinner provided,
4:30 - 6:00pm

January 25th, 9:00am - 4:00pm
January 26th, 9:00am - 12:00pm

January 27th, 9:00am - 4:00pm
Snack provided for Consultation
Session, 4:00 - 6:00pm

January 28th, 9:00am - 2:00pm
No Afternoon Break

Day 1: January 24th, 9:00am - 4:00pm

Two 15 min breaks, 1 hour for lunch at 12:15pm (on your own), Welcome Dinner provided at 4:30 - 6:30pm.

Morning: Putting attachment theory into action in the playroom in the preparation phase.

- Describe at least three aspects of combining an in-depth attachment history with unfolding narratives and dynamics within play therapy sessions to assess for early attachment wounds and disruptions.
- Utilize animal archetypes to identify 8 adaptation strategies children use to cope with complex trauma and explore ways to employ these in the playroom as part of an extended preparation phase.

Powerpoint lecture, practice in pairs, guided experiential intervention

Afternoon: Integrative attachment repair with children and parents using play therapy and somato-sensory play to prepare for processing.

- Analyze themes of play to amplify and suggest metaphors for gradually approaching traumatic material as a way of assessing the attachment and pre-verbal trauma targets
- Utilize 5 play therapy intervention which apply polyvagal theory and therapeutic presence in the playroom to activate the condition for safety during preparation phase



Day 2: January 25th, 9:00am - 4:00pm

Two 15 min breaks, 1 hour for lunch at 12:15pm (on your own)

Morning: The power of narrative in Playful EMDR.

- Utilize a play-based EMDR storytelling method within a play therapy context to heal attachment wounds and preverbal traumas.
- Apply the EMDR storytelling and Clay Little Me protocols in practice sessions.
- Utilize 3 mentalization questions and corresponding attachment repair intervention with caregivers in the play therapy room.

Afternoon: Use a dynamic, movement-intensive approach to apply dissociation theory in support of preparation and EMDR processing, and construct interweaves for fragmented parts of self.

- Apply a screening interview to evaluate children for dissociation in the play therapy room.
- Demonstrate how to use dissociation theory to educate parents about problematic behaviors.
- Distinguish self-states and use developmentally appropriate ego-state language through play with a Dissociation Doll.
- Integrate somatic and sensory resources to decrease dissociative episodes in and out of the play room during desensitization and reprocessing phases of EMDR.

Day 3: January 26th, 9:00am - 12:00pm

One 15 min break at 10:30am, Finish early to relax, recharge, be a tourist!

Morning: Parts of self in the preparation phase

- Explain the function of dissociation in complex trauma as it presents in a play therapy setting
- Apply the principles of curiosity and gradual exposure to allow dissociative parts of self to emerge during preparation for EMDR.
- Demonstrate a play therapy conference table intervention and practice identifying different types of emotional parts/roles, and initiate internal cooperation in sand tray.

Day 4: January 27th, 9:00am - 4:00pm

Two 15 min breaks at 10:30 and 3:45, 1 hour lunch at noon (on your own)

Snack provided for small group consultation 4:00 - 6:00pm

A deep dive into the protective parts of self and using effective strategies with hostile and perpetrator parts, incorporating parents for support in and out of the EMDR processing sessions and as interweaves.

We will analyze videos and transcripts of young children and teens.

Morning:

- Describe 2 Gestalt Play therapy activities used to support meeting attachment needs and apply in an experiential activity.
- Describe examples of engaging with protective parts to cooperate with and support the processing of the wounds of younger parts.

Afternoon:

- Describe 2 strategies to work effectively in play therapy with angry and hostile self-states to resolve traumatic experiences and reduce violent behaviors.
- Utilize parent psychoeducation and coaching to support their highly dissociative children and engage hostile parts.

Day 5: January 28th, 9:00am - 2:00 pm

One 15 min break at 10:30, 1 hour lunch at noon (on your own)

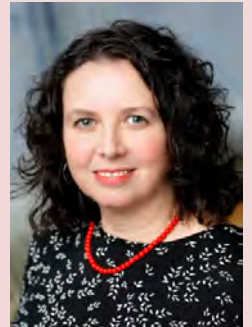
- Analyze an extended case transcript to describe themes and strategies which can help the most wounded and hostile parts to heal and move child towards integration.

Presenters

Ann Beckley-Forest, LCSW, RPT-S, is a Licensed Clinical Social Worker in private practice in Buffalo, New York, and co-founder of Playful EMDR, an online hub for training and consultation in treating trauma-exposed children. Her specialties include attachment and child and adolescent trauma, and she also works with adult survivors. She is certified in EMDR and is an EMDR Approved Consultant and Trainer and a faculty member of the Child Trauma Institute, as well as a Registered Play Therapist and Supervisor and Approved Provider of play therapy continuing education through the Association for Play Therapy. She provides consultation in person and remotely, and gives trainings across the US and internationally. Her primary interest is in the intersection of play therapy and EMDR and has published on this topic including as contributor and co-editor of EMDR with Children in the Play Therapy Room: An Integrated Approach (2020).

Email: ann.beckleyforest@gmail.com

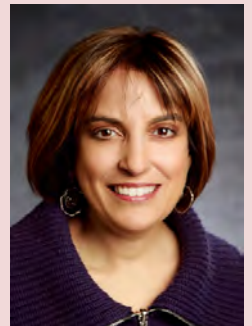
Website: www.annbeckleyforest.com, playfulemdr.com



Annie Monaco, LCSW-R, RPT, is a New York State Licensed Clinical Social Worker, Registered Play Therapist and a faculty member of the Child Trauma Institute & Trauma Institute and of University at Buffalo School of Social Work. Annie travels throughout the US and internationally providing a multitude of trauma-informed trainings and agency and therapist consultation. Annie is an EMDRIA approved trainer of EMDR, Progressive Counting and STAR (Strategies for Trauma Awareness and Resiliency). Annie also provides specialty trainings on attachment, dissociation, and EMDR with Teenagers and with younger children. Annie was a Director of Restorative Justice programs at a non-profit agency where she oversaw juvenile and adult offender programs for over 10 years. Ms. Monaco has extensive experience and training in teens, family therapy and working with the juvenile justice population. Presently her private practice includes a multitude of behaviors and issues including foster care, out of country adoptions, juvenile justice and dissociation. Annie is the co-editor and contributor of chapters for EMDR with Children in the Play Therapy Room, An Integrated Approach (2020).

Email : monaco.training.center@gmail.com

Website : www.annimonaco.com, www.playfulemdr.com



Location

In depth and **in person** training. Limited enrollment of **24 people** in a ideal creative training space

Address:

The Workshop
300 Allen St.
Austin, TX 78702

Continuing Education Hours

CE-Classes.com is approved for 23 CEs by:

- CE-Classes.com is the provider of (CEs)
- The American Psychological Association (APA) CE-Classes.com is approved by the American Psychological Association to sponsor continuing education for psychologists. CE-Classes.com maintains responsibility for this program and its content.
- Florida Certification Board
- The Florida Board of Clinical Social Work, Marriage and Family Therapy and Mental Health Counseling Provider #852 BAP-Expires 3/31/2025
- The California Board of Behavioral Sciences. The California Board of Behavioral Sciences, BBS, recognizes relevant course work/training that has been approved by nationally recognized certifying bodies, such as APA, to satisfy renewal requirements.
- California Consortium of Addiction Programs and Professionals (CCAPP) Provider Number OS-12-174-0225 Expires 02-2025
- The Texas Board of Social Work Examiners – CE-Classes.com meets the requirements for acceptable continuing education. Effective 1/1/24, at least half of the 30 hours must be obtained from a provider listed in 801.261(f). This course meets that requirement.
- The Texas Board of Professional Counselors – CE-Classes.com meets the requirements for acceptable continuing education. Effective 1/1/24, at least half of the 30 hours must be obtained from a provider listed in 801.261(f). This course meets that requirement.
- The Texas Board of Marriage & Family Therapists – CE-Classes.com meets the requirements for acceptable continuing education. Effective 1/1/24, at least half of the 30 hours must be obtained from a provider listed in 801.261(f). This course meets that requirement.
- Massachusetts Authorization Number: (TBD)
- Ohio Counselor, Social Worker and Marriage and Family Therapist Board - Approval from a state licensing board for counselors, social workers, marriage and family therapists is accepted by the OH CSWMFTB.
- New York Social Work Board – CE-Classes.com is recognized by the New York State Education Department's State Board for Social Work as an approved provider of continuing education for licensed social workers #SW-0120.
- New York Mental Health Practitioners Board CE-Classes.com, Inc. is recognized by the New York State Education Department's State Board for Mental Health Practitioners as an approved provider of continuing education for licensed mental health counselors. #MHC-0260.
- New York Psychology Board CE-Classes.com, Inc. is recognized by the New York State Education Department's State Board for Psychology as an approved provider of continuing education for licensed psychologists #PSY-0211
- Oklahoma Board of Behavioral Health Licensure (LPCs, LMFTs and LBCs)
- South Carolina - CE-Classes.com is approved by the S.C. Board of Examiners for Licensure of Professional Counselors, Marriage & Family Therapist, Addiction Counselors, and Psycho-Educational Specialists (#4696).
- Illinois - CE-Classes.com is a registered social work CE sponsor by the State of Illinois. License 159.001607 Expires 11/30/2025

ADA Accommodations

If you require any support for your ADA needs, please contact at least 3 weeks prior to the event at playfulemdr@gmail.com

Please write "EMDR and Play Therapy" in the subject line of the email.

Cost

\$789 includes five days of training, all experiential art supplies, & welcome dinner

Cancellation

As an in-demand small group intensive we are able to offer a 50% refund until 30 days prior to the start. Please note that no refunds will be issued after that point. If the training is cancelled by the presenters, you will receive a full refund.

Grievances

We are happy to respond to any concerns or questions you may have. Please contact playfulemdr@gmail.com Please write "EMDR and Play Therapy" in the subject line of the email.

- The Florida Board of Nursing (CE Provider #: 50-4896) Expires 10/31/2024 Do not send certificates to the Florida Board of Nursing. You must keep this certificate for 4 years.
- The California Board of Registered Nursing. CEP 15647 Expires 11/30/2024.
- This course is NOT available for NBCC credit
- This training does not offer ASWB ACE credit to social workers.
- 23 CEs for play therapists in skills/methods/special topics are available. Ann Beckley-Forest is APT Approved Provider 15-406. Play therapy credit will not be granted to non-mental health professionals.
- Annie Monaco is an EC Provider (#18007) and this program (#18007-95) is approved for 23 EMDRIA Credits. Eligibility for EMDRIA Credits is restricted to those who have completed an EMDRIA-Approved Basic EMDR Training.
- EMDRIA Credit Approval Number: #18007-101

Certificates are awarded online after completion of the workshop. Participants print their own certificate after registering at CE-Classes.com, entering a keycode, and completing an evaluation form. Licensed Professionals should contact their regulatory board to determine course approval.

There is no known commercial support for this program. Potential conflict of interest: The presenters helped develop and are investors in the "Allmee" dissociation therapy doll which is mentioned during this training.